

## Alphawave IP's technology helps semiconductors communicate with each other

enabling data to travel faster, more reliably, at lower power

### At a Glance



#### Founded

2017 - Funded exclusively by experienced founding team with 20+ year track record



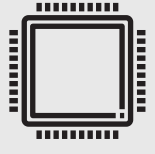
#### Global HQ

London, UK & Toronto, Canada



#### Mission

To be the world's leading provider of connectivity solutions for high-speed data transmission



#### Key Products

Connectivity solutions delivered as Silicon IP cores, full contact IPs, chiplet IPs



#### Business Model

Profitable business with ARM-like technology licensing and royalties



#### Global Presence

Sales and support offices in North America, UK, Europe, and Asia Pacific



#### Diverse Global Customer Base

20 design wins with Tier 1 global customers such as TSMC and Samsung



#### Market Drivers

Enabling customer success and reducing risk by providing turnkey connectivity solutions that work the first time

### Key Financials

**\$194m**

Cumulative Bookings (2017 to 2021 Q1)

**95%**

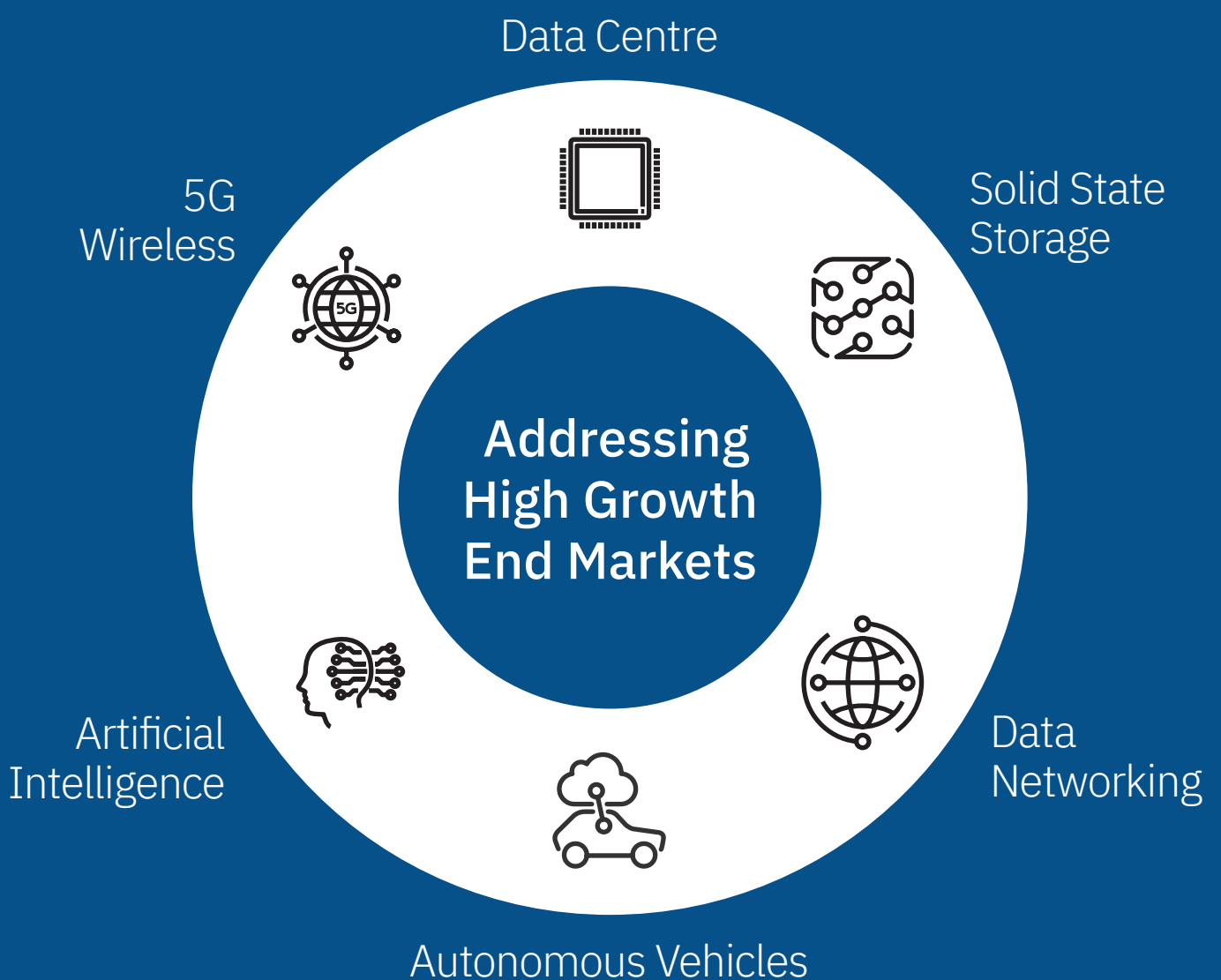
Gross Margin (2020A)

**50%+**

EBITDA Margin (2020A)

**c.200%**

YOY Revenue Growth (2019-2020A)



## What Differentiates Us

Market leadership through **differentiated digital technology**

**Pure focus** on high-speed connectivity

**Deep relationships with Tier 1** global tech leaders

Strong **leadership with extensive track record** of execution

**Profitable, high growth**, high margin, high financial visibility business

## Industry Megatrends in Our Key End Markets



### Cloud Migration

Cloud market approaching \$1,000bn by 2025



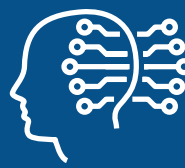
### Solid State Storage

825bn gigabytes of flash memory consumption by 2024



### Networking and Compute

Growth in data centre switch ports across 400Gbps and 800Gbps



### Artificial Intelligence

Multi-layered and complex usage of ML in CPUs, GPUs, FPGAs, and ASICs

We Focus on the Hardest to Solve Connectivity Challenges



Faster Speed



Lower Power



Lower Cost

## Highly Technical Founding team

**Tony Pialis\*** President & CEO

**Jonathan Rogers** Senior Vice President Engineering

**Raj Mahadevan** Senior Vice President Operations

**John Lofton Holt\*** Executive Chairman

Successful track record of building semiconductor & hardware companies

## Diverse and Experienced Board

\*Included on the board

**Daniel Aharoni** Chief Financial Officer

**Sehat Sutardja** Executive Director

**Jan Frykhammar** Senior Independent Director

**Paul Boudre** Non-Executive Director

**Susan Buttsworth** Non-Executive Director

**Victoria Hull** Non-Executive Director

**Michelle Senecal de Fonseca** Non-Executive Director

**Rosalind Singleton** Non-Executive Director